



**Government of India
Ministry of Earth Sciences**

India Meteorological Department

PRESS RELEASE-6

Time of issue: 1230 hours IST

Dated: 25th October, 2023

**Sub: (A) Well Marked Low Pressure Area over Yemen
(B) Deep Depression over southeast Bangladesh & adjoining Mizoram**

(A) Well Marked Low Pressure Area over Yemen

Yesterday's Severe Cyclonic Storm "Tej" over Coastal Yemen weakened rapidly after making landfall over Yemen, into a Cyclonic Storm over around noon (1130 hours IST), Deep Depression in the afternoon (1430 hours IST), Depression in the evening (1730 hours IST) and Well Marked Low Pressure area over Yemen in the same night (2030 hours IST) of 24th October, 2023. The observed track of the system is placed in Annexure.

This is last update with respect to this system.

(B) Deep Depression [Remnant of Hamoon] over southeast Bangladesh & adjoining Mizoram

Yesterday's Very Severe Cyclonic Storm over Northwest and adjoining Northeast Bay of Bengal weakened into a Severe Cyclonic Storm over northeast Bay of Bengal in the same evening (1730 hours IST of 24th October, 2023). It further weakened into a Cyclonic Storm and crossed Bangladesh coast to the south of Chittagong near latitude 21.9°N and longitude 91.9°E between 0130 hours IST & 0230 hours IST of today, the 25th October as a Cyclonic Storm with wind speed of 75-85 kmph gusting to 95 kmph. It further weakened into a Deep Depression and lay centered at 0830 hours IST of today, the 25th October over southeast Bangladesh & adjoining Mizoram near latitude 22.4°N and longitude 92.4°E, about 60 km east of Chittagong (Bangladesh) and 150 km south-southeast of Aizawl (Mizoram).

It is very likely to move northeastwards and weaken further into a depression during next 06 hours and into a well marked low pressure area during subsequent 06 hours.

Forecast track and intensity are given below:

Date/Time (IST)	Position (Lat. °N/ long. °E)	Maximum sustained surface wind speed (Kmph)	Category of cyclonic disturbance
25.10.23/0830	22.4/92.4	55-65 gusting to 75	Deep Depression
25.10.23/1130	22.8/92.7	50-60 gusting to 70	Deep Depression
25.10.23/1730	23.4/93.2	40-50 gusting to 60	Depression
25.10.23/2330	24.0/93.7	25-35 gusting to 45	Well Marked Low Pressure Area

**Contact: Cyclone Warning Division, Office of the Director General of Meteorology,
India Meteorological Department, Ministry of Earth Sciences.**

Phone:(91) 11-24652484, FAX: (91) 11-24643128, 24623220, E-mail:cwdhq2008@gmail.com, Website: rsmcnewdelhi.ind.gov.in

Spatial rainfall distribution: Isolated: <25%, A few: 26-50%, Many: 51-75%, Most: 76-100%

Rainfall amount (mm): Heavy rain: 64.5 – 115.5, Very heavy rain: 115.6 – 204.4, Extremely heavy rain: 204.5 or more.

Warnings:

(i) Rainfall Warning:

Manipur, Mizoram & Tripura and south Assam & Meghalaya: Light to moderate rainfall is very likely at many places over the above region with isolated heavy rainfall over Mizoram on 25th October.

Light to moderate rainfall is very likely at many places over Nagaland, Manipur and east Arunachal Pradesh on 25th & 26th October.

(ii) Wind warning (warning graphics enclosed):

- **Northeast Bay of Bengal:**

Squally wind speed reaching **50-60 kmph gusting to 70 kmph** is prevailing and likely to decrease gradually becoming **35-45 kmph gusting to 55 kmph** by 25th evening and would decrease thereafter.

- **Along & off Bangladesh and north Myanmar coasts:**

Squally wind speed reaching **50-60 kmph gusting to 70 kmph** is prevailing **along & off Bangladesh and adjoining north Myanmar coast** and likely to decrease gradually become **35-45 kmph gusting to 55 kmph** by 25th evening and would decrease further thereafter.

- **Mizoram, Tripura, south Assam and Manipur:**

Squally wind speed reaching **30-40 kmph gusting to 50 kmph** is likely to prevail over Mizoram and Tripura and **Strong wind** speed reaching **25-35 kmph gusting to 45 kmph** over Manipur on 25th October.

(iii) Sea Condition

Northeast Bay of Bengal and along & off Bangladesh & adjoining north Myanmar coasts:

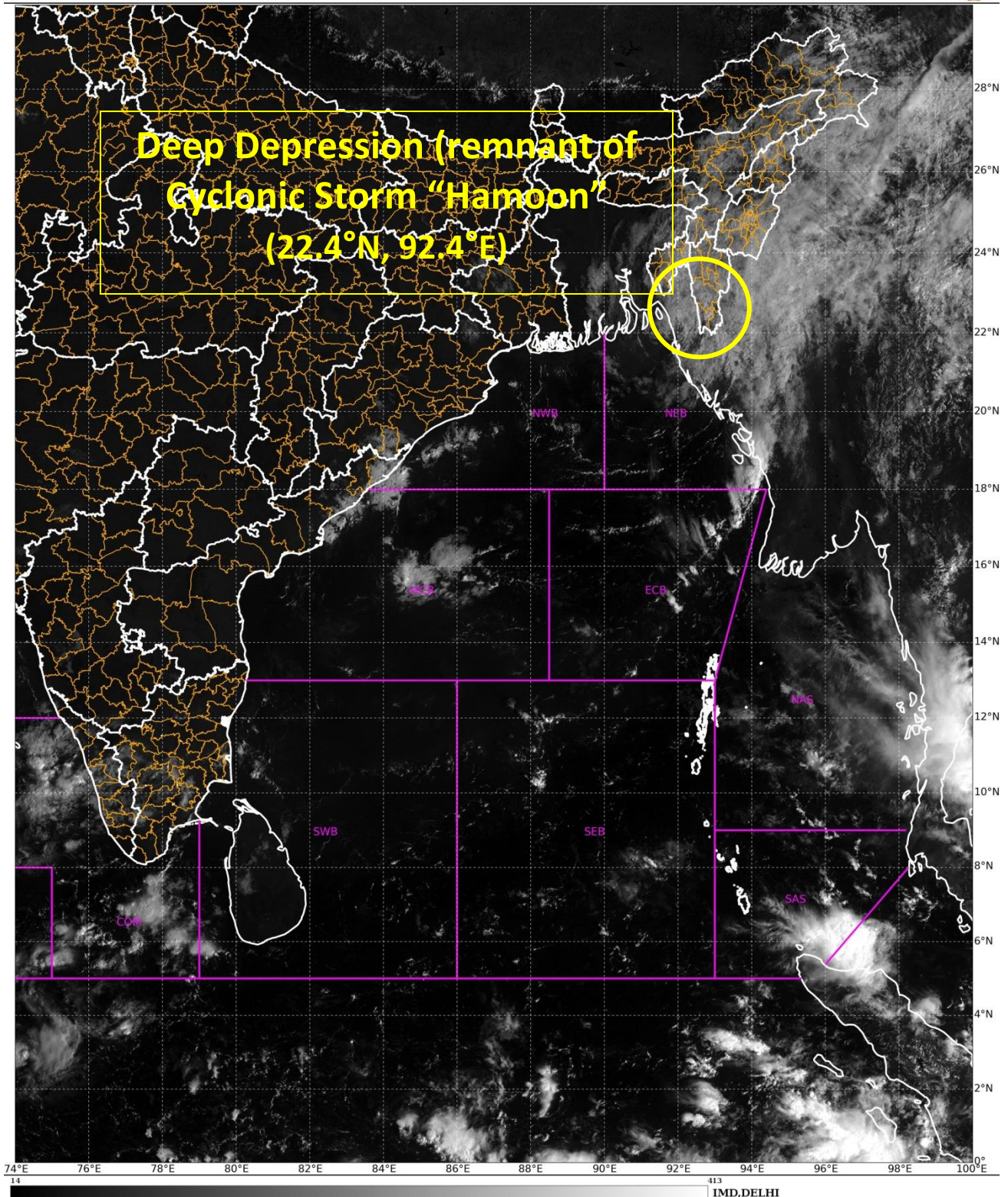
Very rough to rough sea condition would prevail during next 06 hours and would improve thereafter.

(iv) Fishermen Warning (Graphics attached):

Fishermen are advised not to venture into **Northeast Bay of Bengal and along & off Bangladesh & north Myanmar coasts** till 25th October evening

The system is under continuous surveillance and regular updates are issued by IMD in this regard. Next Press Release will be issued at 1230 hours IST of the 26th October, 2023.

For regular updates kindly visit www.rsmcnewdelhi.imd.gov.in and www.mausam.imd.gov.in



Contact: Cyclone Warning Division, Office of the Director General of Meteorology,
India Meteorological Department, Ministry of Earth Sciences.

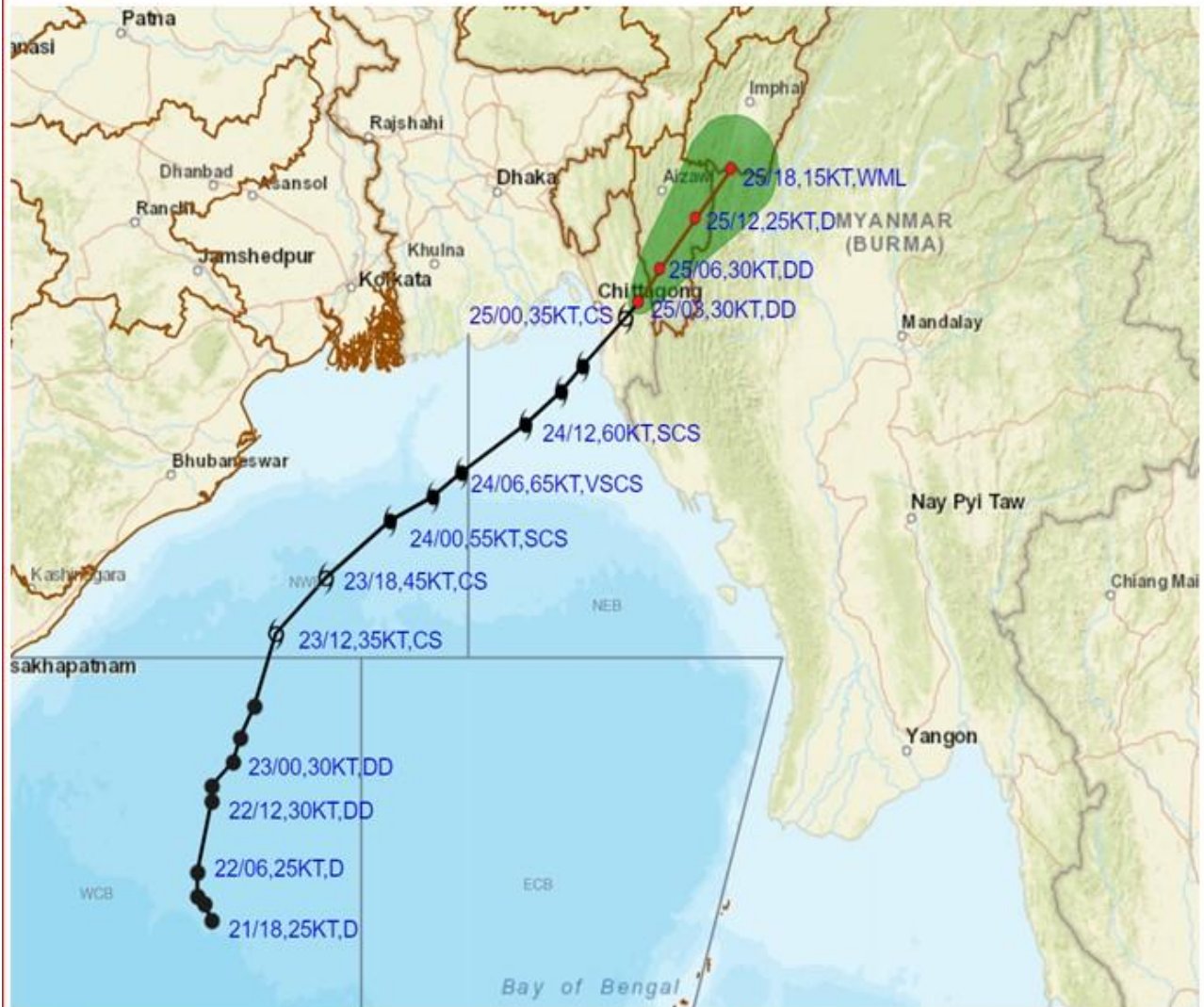
Phone:(91) 11-24652484, FAX: (91) 11-24643128, 24623220, E-mail:cwdhq2008@gmail.com, Website: rsmcnewdelhi.imd.gov.in

Spatial rainfall distribution: Isolated: <25%, A few: 26-50%, Many: 51-75%, Most: 76-100%

Rainfall amount (mm): Heavy rain: 64.5 – 115.5, Very heavy rain: 115.6 – 204.4, Extremely heavy rain: 204.5 or more.



OBSERVED AND FORECAST TRACK ALONGWITH CONE OF UNCERTAINTY OF DEEP DEPRESSION (REMNANT OF CYCLONIC STORM HAMOON) OVER SOUTHEAST BANGLADESH & ADJOINING MIZORAM BASED ON 0300 UTC (0830 IST) OF 25TH OCTOBER 2023.



DATE/TIME IN UTC
IST=UTC + 0530

L: LOW PRESSURE AREA

WML: WELL MARKED LOW PRESSURE AREA

D: DEPRESSION (17-27 KT)

DD: DEEP DEPRESSION (28-33 KT)

CS: CYCLONIC STORM (34-47 KT)

SCS: SEVERE CYCLONIC STORM (48-63KT)

VSCS: VERY SEVERE CYCLONIC STORM (64-89 KT)

ESCS: EXTREMELY SEVERE CYCLONIC STORM (90-119 KT)

SuCS: SUPER CYCLONIC STORM (\geq 120 KT)

● LESS THAN 34 KT

○ 34-47 KT

⦿ \geq 48 KT

— OBSERVED TRACK

— FORECAST TRACK

▲ CONE OF UNCERTAINTY

Contact: Cyclone Warning Division, Office of the Director General of Meteorology,
India Meteorological Department, Ministry of Earth Sciences.

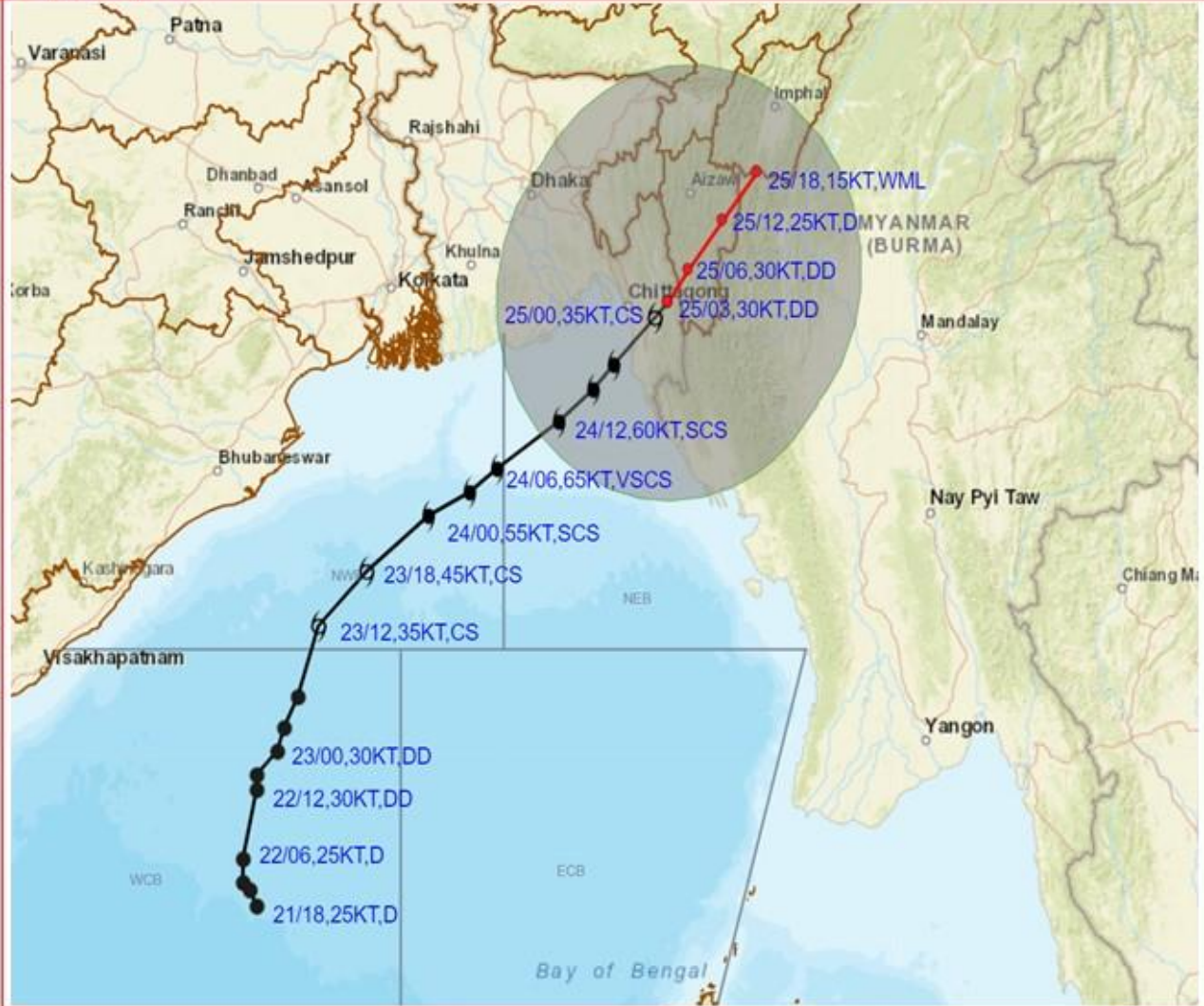
Phone:(91) 11-24652484, FAX: (91) 11-24643128, 24623220, E-mail:cwdhq2008@gmail.com, Website: rsmcnewdelhi.ind.gov.in

Spatial rainfall distribution: Isolated: <25%, A few: 26-50%, Many: 51-75%, Most: 76-100%

Rainfall amount (mm): Heavy rain: 64.5 – 115.5, Very heavy rain: 115.6 – 204.4, Extremely heavy rain: 204.5 or more.



OBSERVED AND FORECAST TRACK ALONGWITH QUADRANT WIND DISTRIBUTION OF DEEP DEPRESSION (REMNANT OF CYCLONIC STORM HAMOON) OVER SOUTHEAST BANGLADESH & ADJOINING MIZORAM BASED ON 0300 UTC (0830 IST) OF 25TH OCTOBER 2023.



DATE/TIME IN UTC
 IST=UTC + 0530
 L: LOW PRESSURE AREA
 WML: WELL MARKED LOW PRESSURE AREA
 D: DEPRESSION (17-27 KT)
 DD: DEEP DEPRESSION (28-33 KT)
 CS: CYCLONIC STORM (34-47 KT)
 SCS: SEVERE CYCLONIC STORM (48-63KT)
 VSCS: VERY SEVERE CYCLONIC STORM (64-89 KT)
 ESCS: EXTREMELY SEVERE CYCLONIC STORM (90-119 KT)
 SuCS: SUPER CYCLONIC STORM (≥ 120 KT)

● LESS THAN 34 KT
 ○ 34.47 KT
 ⊙ ≥ 48 KT
 — OBSERVED TRACK
 — FORECAST TRACK
 ▲ CONE OF UNCERTAINTY
 AREA OF MAXIMUM SUSTAINED WIND SPEED:
 ■ 28-33 KT (52-61 KMPH)
 ■ 34-49 KT (62-91 KMPH)
 ■ 50-63 KT (92-117 KMPH)
 ■ ≥ 64 KT (≥118 KMPH)

IMPACT OVER THE SEA

MSW (knot/kmph)	Impact	Action
28-33 (52-61)	Very rough seas	Total suspension of fishing operations
34-49 (62-91)	High to very high seas	Total suspension of fishing operations
50-63 (92-117)	Very high seas	Total suspension of fishing operations
≥ 64 (≥118)	Phenomenal	Total suspension of fishing operations

Contact: Cyclone Warning Division, Office of the Director General of Meteorology, India Meteorological Department, Ministry of Earth Sciences.

Phone:(91) 11-24652484, FAX: (91) 11-24643128, 24623220, E-mail:cwdhq2008@gmail.com, Website: smcnewdelhi.ind.gov.in

Spatial rainfall distribution: Isolated: <25%, A few: 26-50%, Many: 51-75%, Most: 76-100%

Rainfall amount (mm): Heavy rain: 64.5 – 115.5, Very heavy rain: 115.6 – 204.4, Extremely heavy rain: 204.5 or more.

Fishermen warning graphics



Contact: Cyclone Warning Division, Office of the Director General of Meteorology,
India Meteorological Department, Ministry of Earth Sciences.

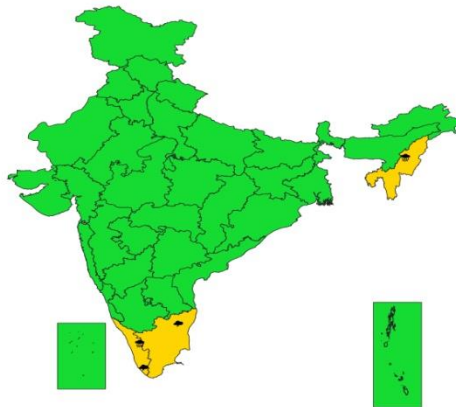
Phone:(91) 11-24652484, FAX: (91) 11-24643128, 24623220, E-mail:cwdhq2008@gmail.com, Website: rsmcnewdelhi.ind.gov.in

Spatial rainfall distribution: Isolated: <25%, A few: 26-50%, Many: 51-75%, Most: 76-100%

Rainfall amount (mm): Heavy rain: 64.5 – 115.5, Very heavy rain: 115.6 – 204.4, Extremely heavy rain: 204.5 or more.

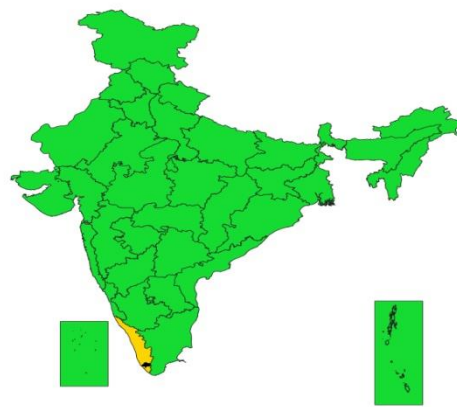
WEATHER WARNING GRAPHICS

 **SUBDIVISIONWISE WEATHER WARNING FOR DAY 1**
(25-10-2023)



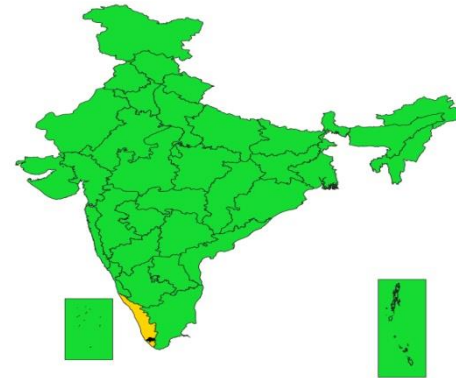
Subdivision Warning ☁ Heavy Rain ❄ Heavy Snow ⚡ Thunderstorms & Lightning 🌩 Hailstorm	☁ Dust Storm 🌪 Strong Surface Winds 🌡 Heat Wave ❄ Cold wave 🌫 Fog	Subdivision color 🟢 NO WARNING 🟡 WATCH (BE UPDATED) 🟠 ALERT (BE PREPARED) 🔴 WARNING (TAKE ACTION)
--	---	--

 **SUBDIVISIONWISE WEATHER WARNING FOR DAY 2**
(26-10-2023)



Subdivision Warning ☁ Heavy Rain ❄ Heavy Snow ⚡ Thunderstorms & Lightning 🌩 Hailstorm	☁ Dust Storm 🌪 Strong Surface Winds 🌡 Heat Wave ❄ Cold wave 🌫 Fog	Subdivision color 🟢 NO WARNING 🟡 WATCH (BE UPDATED) 🟠 ALERT (BE PREPARED) 🔴 WARNING (TAKE ACTION)
--	---	--

 **SUBDIVISIONWISE WEATHER WARNING FOR DAY 3**
(27-10-2023)



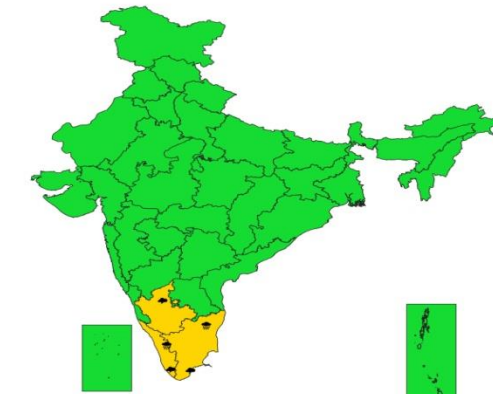
Subdivision Warning ☁ Heavy Rain ❄ Heavy Snow ⚡ Thunderstorms & Lightning 🌩 Hailstorm	☁ Dust Storm 🌪 Strong Surface Winds 🌡 Heat Wave ❄ Cold wave 🌫 Fog	Subdivision color 🟢 NO WARNING 🟡 WATCH (BE UPDATED) 🟠 ALERT (BE PREPARED) 🔴 WARNING (TAKE ACTION)
--	---	--

 **SUBDIVISIONWISE WEATHER WARNING FOR DAY 4**
(28-10-2023)



Subdivision Warning ☁ Heavy Rain ❄ Heavy Snow ⚡ Thunderstorms & Lightning 🌩 Hailstorm	☁ Dust Storm 🌪 Strong Surface Winds 🌡 Heat Wave ❄ Cold wave 🌫 Fog	Subdivision color 🟢 NO WARNING 🟡 WATCH (BE UPDATED) 🟠 ALERT (BE PREPARED) 🔴 WARNING (TAKE ACTION)
--	---	--

 **SUBDIVISIONWISE WEATHER WARNING FOR DAY 5**
(29-10-2023)



Subdivision Warning ☁ Heavy Rain ❄ Heavy Snow ⚡ Thunderstorms & Lightning 🌩 Hailstorm	☁ Dust Storm 🌪 Strong Surface Winds 🌡 Heat Wave ❄ Cold wave 🌫 Fog	Subdivision color 🟢 NO WARNING 🟡 WATCH (BE UPDATED) 🟠 ALERT (BE PREPARED) 🔴 WARNING (TAKE ACTION)
--	---	--

	WATCH (BE UPDATED)
	ALERT (BE PREPARED)
	WARNING (TAKE ACTION)

Contact: Cyclone Warning Division, Office of the Director General of Meteorology, India Meteorological Department, Ministry of Earth Sciences.

Phone: (91) 11-24652484, FAX: (91) 11-24643128, 24623220, E-mail: cwdhq2008@gmail.com, Website: rsmcnewdelhi.ind.gov.in

Spatial rainfall distribution: Isolated: <25%, A few: 26-50%, Many: 51-75%, Most: 76-100%

Rainfall amount (mm): Heavy rain: 64.5 – 115.5, Very heavy rain: 115.6 – 204.4, Extremely heavy rain: 204.5 or more.



OBSERVED TRACK OF EXTREMELY SEVERE CYCLONIC STORM "TEJ" OVER YEMEN DURING 20TH TO 24TH OCTOBER 2023.



DATE/TIME IN UTC

IST=UTC + 0530

L: LOW PRESSURE AREA

WML: WELL MARKED LOW PRESSURE AREA

D: DEPRESSION (17-27 KT)

DD: DEEP DEPRESSION (28-33 KT)

CS: CYCLONIC STORM (34-47 KT)

SCS: SEVERE CYCLONIC STORM (48-63KT)

VSCS: VERY SEVERE CYCLONIC STORM (64-89 KT)

ESCS: EXTREMELY SEVERE CYCLONIC STORM (90-119 KT)

SuCS: SUPER CYCLONIC STORM (\geq 120 KT)

● LESS THAN 34 KT

○ 34-47 KT

⊗ \geq 48 KT

— OBSERVED TRACK

— FORECAST TRACK

▲ CONE OF UNCERTAINTY

Contact: Cyclone Warning Division, Office of the Director General of Meteorology,

India Meteorological Department, Ministry of Earth Sciences.

Phone:(91) 11-24652484, FAX: (91) 11-24643128, 24623220, E-mail:cwdhq2008@gmail.com, Website: rsmcnewdelhi.ind.gov.in

Spatial rainfall distribution: Isolated: <25%, A few: 26-50%, Many: 51-75%, Most: 76-100%

Rainfall amount (mm): Heavy rain: 64.5 – 115.5, Very heavy rain: 115.6 – 204.4, Extremely heavy rain: 204.5 or more.

